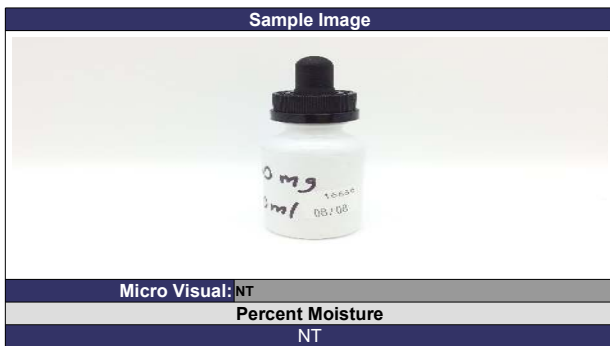
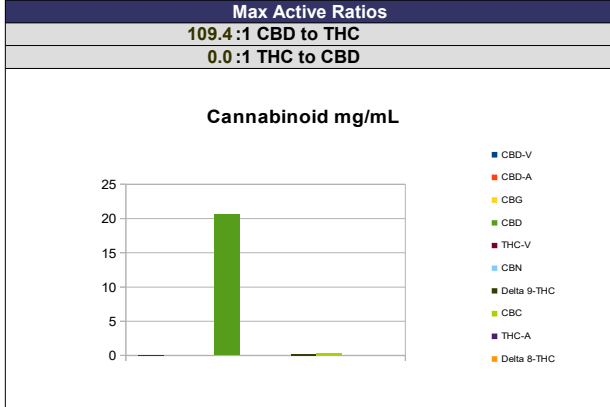
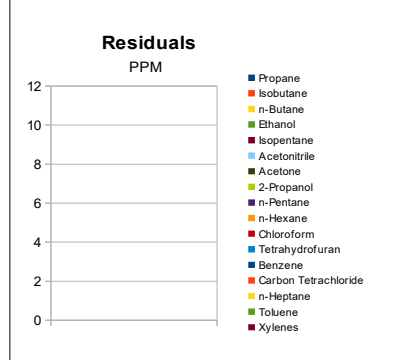


Sample Information			
Sample Identification	600mg/30mL		
Laboratory Number	2019016686		
Batch Number	07312019		
Matrix	Tincture		
Analyzed Date	08/08/19		
Extraction Date	08/08/19		
Cannabinoid (HPLC)	mg/mL	mg/Bottle	%
Compound			
CBD-V	0.10	2.87	0.01%
CBD-A	ND	ND	ND
CBG	ND	ND	ND
CBD	20.58	617.46	2.05%
THC-V	ND	ND	ND
CBN	ND	ND	ND
Delta 9-THC	0.19	5.65	0.02%
CBC	0.31	9.41	0.03%
THC-A	ND	ND	ND
Delta 8-THC	ND	ND	ND
Cannabinoids Total			
Max Active THC	0.19	5.65	0.02%
Max Active CBD	20.58	617.46	2.05%
T. Active Cannabinoids	21.18	635.38	2.11%
Total Cannabinoids	21.18	635.38	2.11%



RS (GCMS-MS)	PPM	RL
Compound		
Propane	NT	5.0
Isobutane	NT	5.0
n-Butane	NT	5.0
Ethanol	NT	5.0
Isopentane	NT	5.0
Acetonitrile	NT	5.0
Acetone	NT	50.0
2-Propanol	NT	5.0
n-Pentane	NT	5.0
n-Hexane	NT	5.0
Chloroform	NT	5.0
Tetrahydrofuran	NT	5.0
Benzene	NT	5.0
Carbon Tetrachloride	NT	5.0
n-Heptane	NT	5.0
Toluene	NT	5.0
Xylenes	NT	10.0



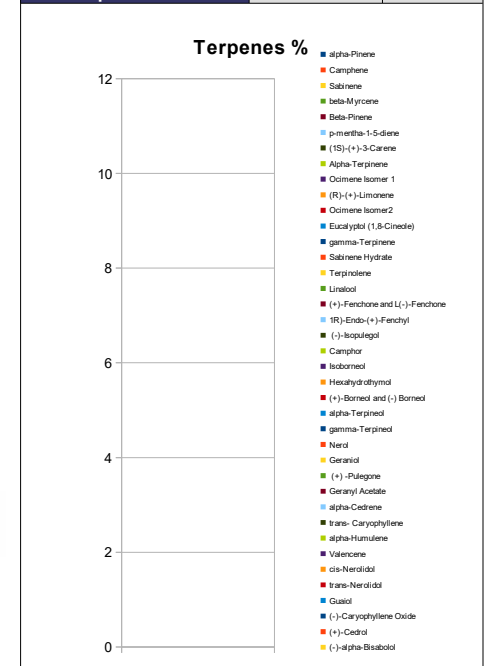
mL/Bottle	30
mg THC/Bottle	5.65
mg CBD/Bottle	617.46
(mg) total cannabinoids/bottle	635.38

Metals	PPM	RL
Compound		
Lead	NT	0.018
Arsenic	NT	0.007
Cadmium	NT	0.004
Mercury	NT	0.020

Microbial	CFU/g
Compound	
Enterobacteriaceae	NT
Coliform	NT
Ecoli	NT
Aerobic	NT
Yeast	NT
Mold	NT



Terpene (GC-MS)	mg/mL	mg/Bottle
Compound		
alpha-Pinene	NT	NT
Camphene	NT	NT
Sabinene	NT	NT
beta-Myrcene	NT	NT
Beta-Pinene	NT	NT
p-mentha-1-5-diene	NT	NT
(1S)-(+)-3-Carene	NT	NT
Alpha-Terpinene	NT	NT
Ocimene Isomer 1	NT	NT
(R)-(+)-Limonene	NT	NT
Ocimene Isomer 2	NT	NT
Eucalyptol (1,8-Cineole)	NT	NT
gamma-Terpinene	NT	NT
Sabinene Hydrate	NT	NT
Terpinolene	NT	NT
Linalool	NT	NT
(+)-Fenchone and L(-)-Fenchone	NT	NT
1R)-Endo-(+)-Fenchyl	NT	NT
(-)-Isopulegol	NT	NT
Camphor	NT	NT
Isoborneol	NT	NT
Hexahydrothymol	NT	NT
(+)-Borneol and (-) Borneol	NT	NT
alpha-Terpineol	NT	NT
gamma-Terpineol	NT	NT
Nerol	NT	NT
Geraniol	NT	NT
(+) -Pulegone	NT	NT
Geranyl Acetate	NT	NT
alpha-Cedrene	NT	NT
trans- Caryophyllene	NT	NT
alpha-Humulene	NT	NT
Valencene	NT	NT
cis-Nerolidol	NT	NT
trans-Nerolidol	NT	NT
Guaiol	NT	NT
(-)-Caryophyllene Oxide	NT	NT
(+)-Cedrol	NT	NT
(-)-alpha-Bisabolol	NT	NT
Total Terpenes	NT	NT



Chemist: JG
Report Expires: 11/07/19

RL=Reporting Limit
NA=Not Applicable
NT=Not Tested
ND=Non Detected
NTC=Too Numerous to Count